

BASEMENT LEVEL



DENMAN STREET



SHERNOD STREET

SHAFTESBURY AVENUE

GLASSHOUSE STREET

08

SCHEDULE OF AREAS

BASEMENT LEVEL

RETAIL UNIT A	325 M ²	3,498 FT ²	●
RETAIL UNIT B	366 M ²	3,940 FT ²	●
RETAIL UNIT G	301 M ²	3,240 FT ²	●

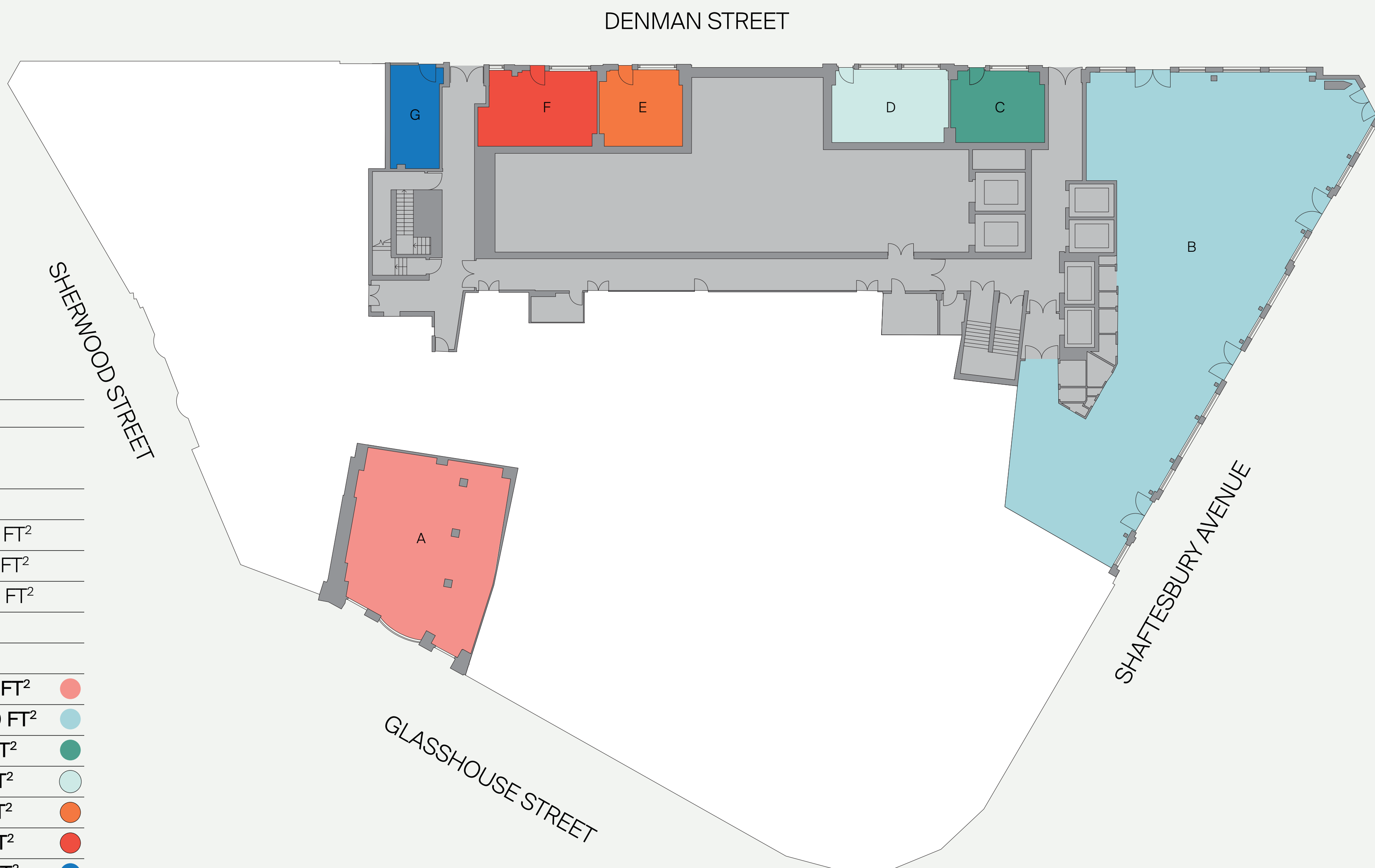
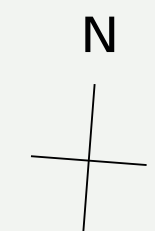
GROUND FLOOR

RETAIL UNIT A	115 M ²	1,238 FT ²
RETAIL UNIT B	393 M ²	4,230 FT ²
RETAIL UNIT C	30 M ²	323 FT ²
RETAIL UNIT D	40 M ²	431 FT ²
RETAIL UNIT E	29 M ²	312 FT ²
RETAIL UNIT F	41 M ²	441 FT ²
RETAIL UNIT G	26M ²	280 FT ²

FIRST FLOOR

UNIT B	880 M ²	9,472 FT ²
--------	--------------------	-----------------------

GROUND FLOOR



09

SCHEDULE OF AREAS

BASEMENT LEVEL

RETAIL UNIT A	325 M ²	3,498 FT ²
RETAIL UNIT B	366 M ²	3940 FT ²
RETAIL UNIT G	301 M ²	3,240 FT ²

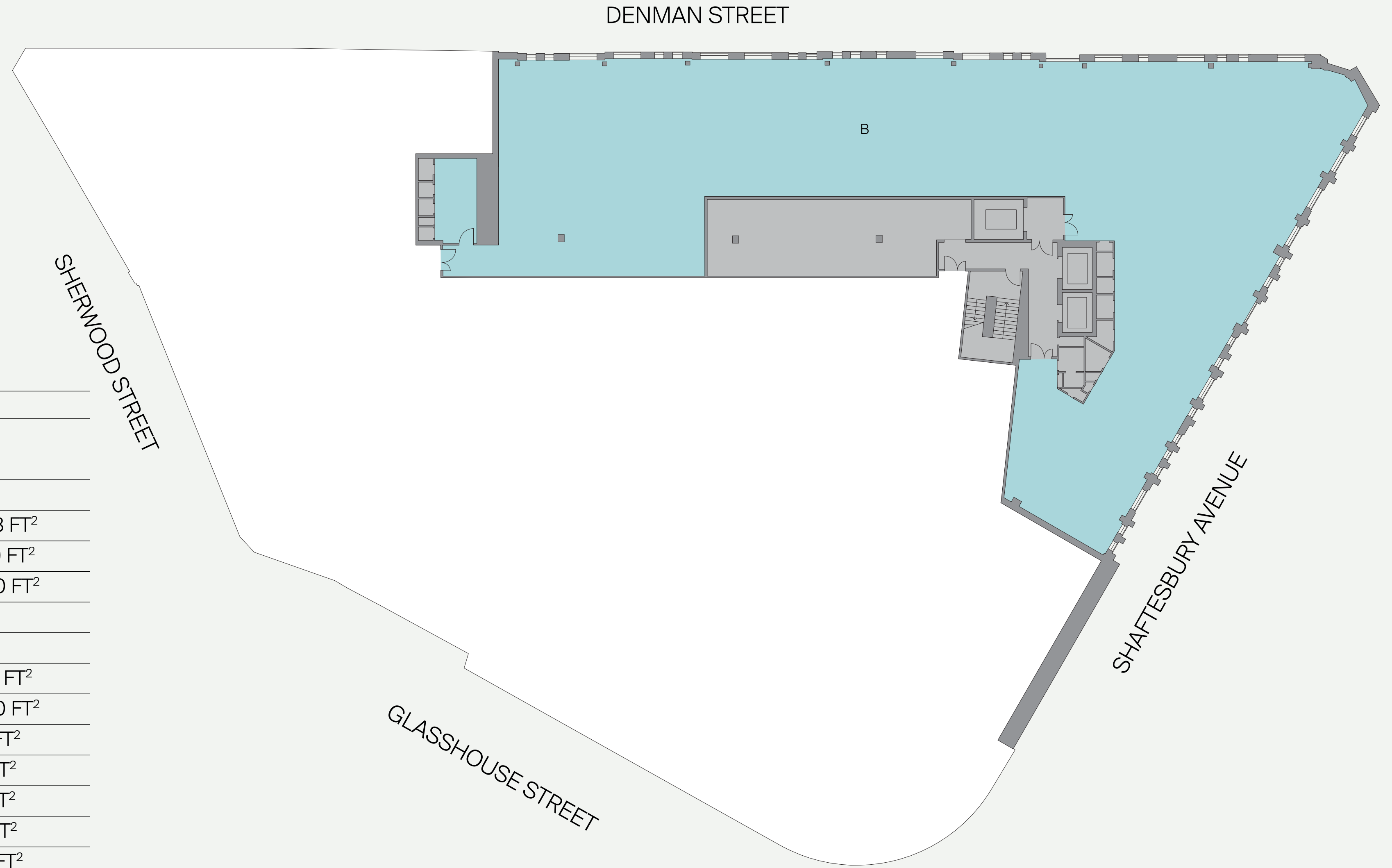
GROUND FLOOR

RETAIL UNIT A	115 M ²	1,238 FT ²	●
RETAIL UNIT B	393 M ²	4,230 FT ²	●
RETAIL UNIT C	30 M ²	323 FT ²	●
RETAIL UNIT D	40 M ²	431 FT ²	●
RETAIL UNIT E	29 M ²	312 FT ²	●
RETAIL UNIT F	41 M ²	441 FT ²	●
RETAIL UNIT G	26M ²	280 FT ²	●

FIRST FLOOR

UNIT B	880 M ²	9,472 FT ²
--------	--------------------	-----------------------

FIRST FLOOR



10

SCHEDULE OF AREAS

BASEMENT LEVEL

RETAIL UNIT A	325 M ²	3,498 FT ²
RETAIL UNIT B	366 M ²	3,940 FT ²
RETAIL UNIT G	301 M ²	3,240 FT ²

GROUND FLOOR

RETAIL UNIT A	115 M ²	1,238 FT ²
RETAIL UNIT B	393 M ²	4,230 FT ²
RETAIL UNIT C	30 M ²	323 FT ²
RETAIL UNIT D	40 M ²	431 FT ²
RETAIL UNIT E	29 M ²	312 FT ²
RETAIL UNIT F	41 M ²	441 FT ²
RETAIL UNIT G	26M ²	280 FT ²

FIRST FLOOR

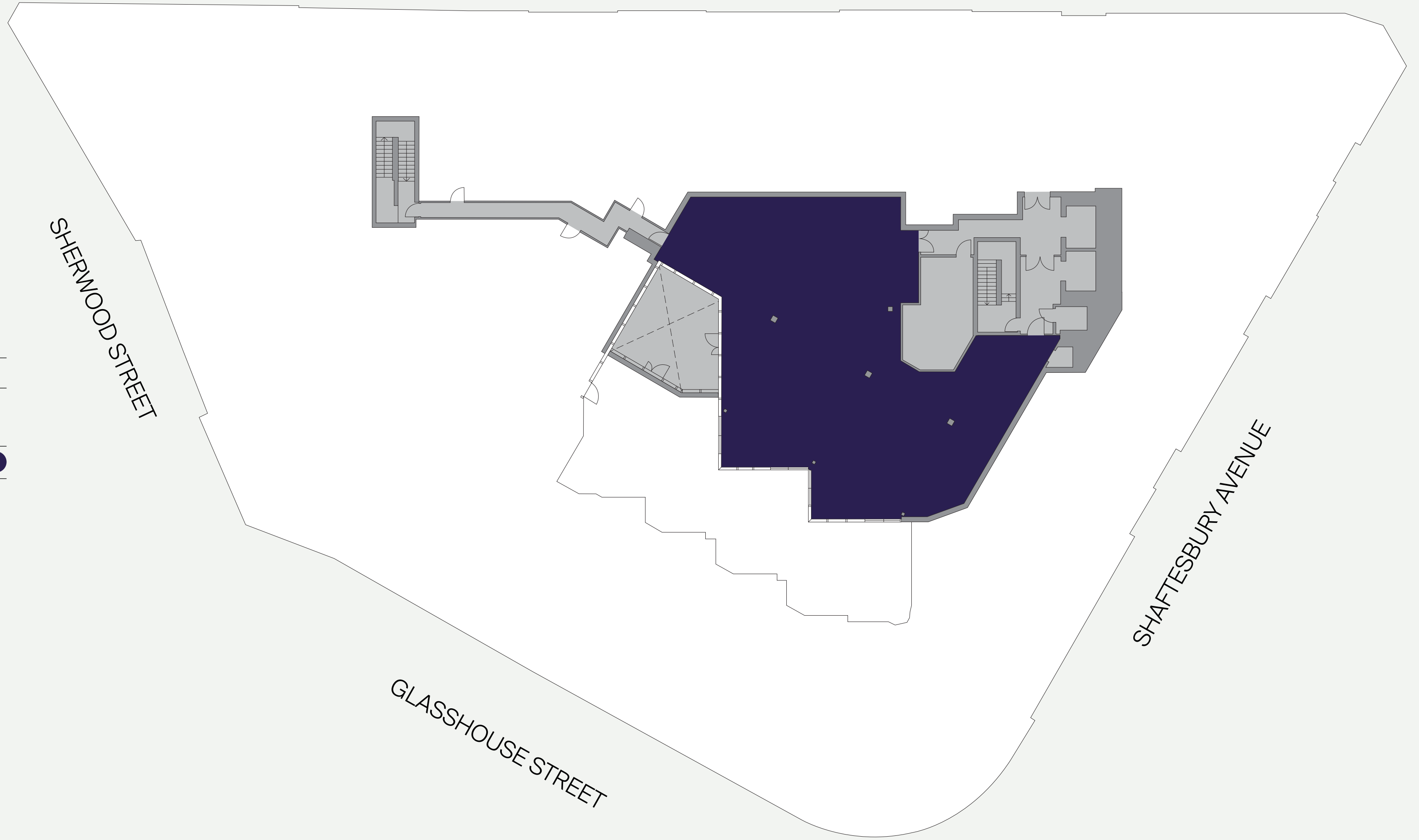
UNIT B	880 M ²	9,472 FT ²	●
--------	--------------------	-----------------------	--

RESTAURANT

SEVENTH FLOOR



DENMAN STREET



SHERWOOD STREET

SHAFTESBURY AVENUE

GLASSHOUSE STREET

12

SCHEDULE OF AREAS

RESTAURANT 343M² 3,692 FT² ●

*APPROX. NIA